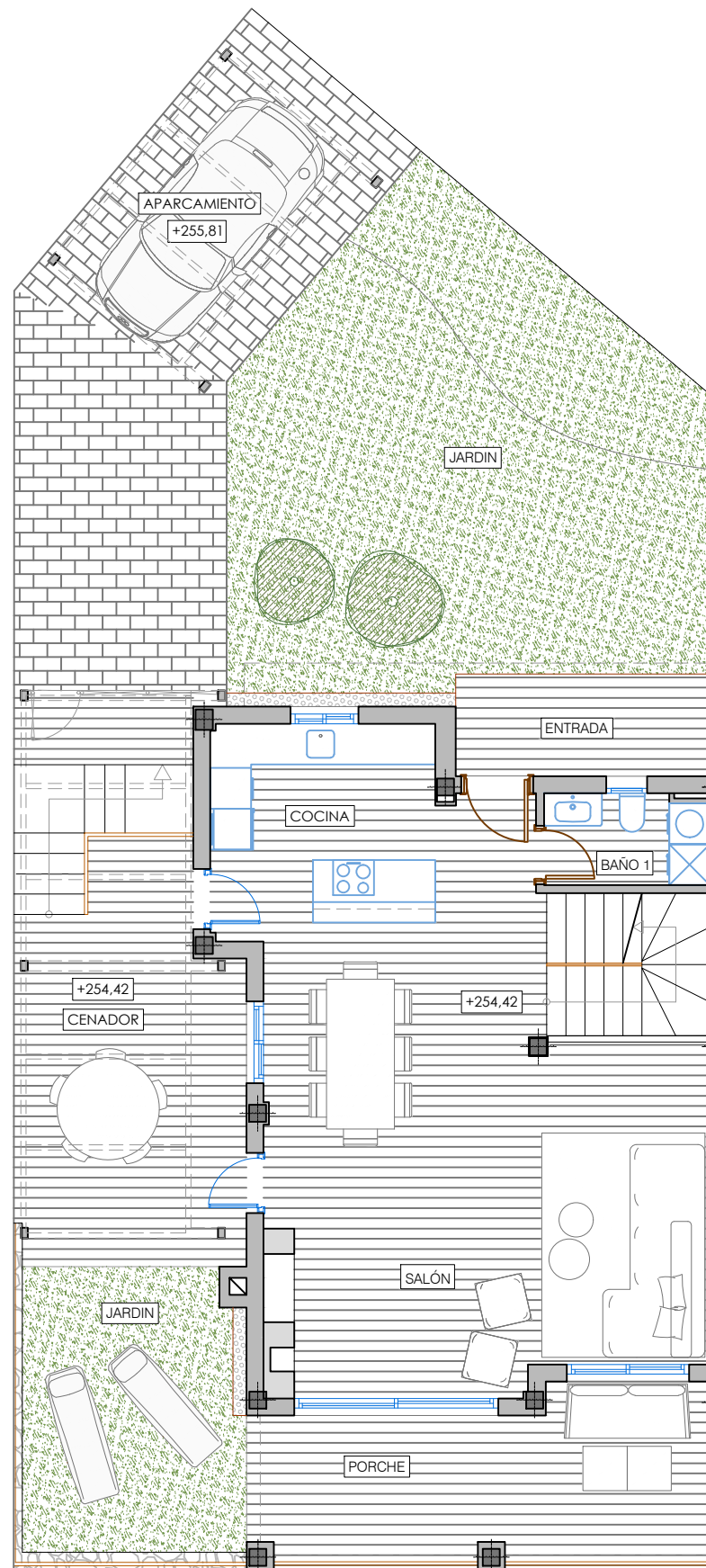


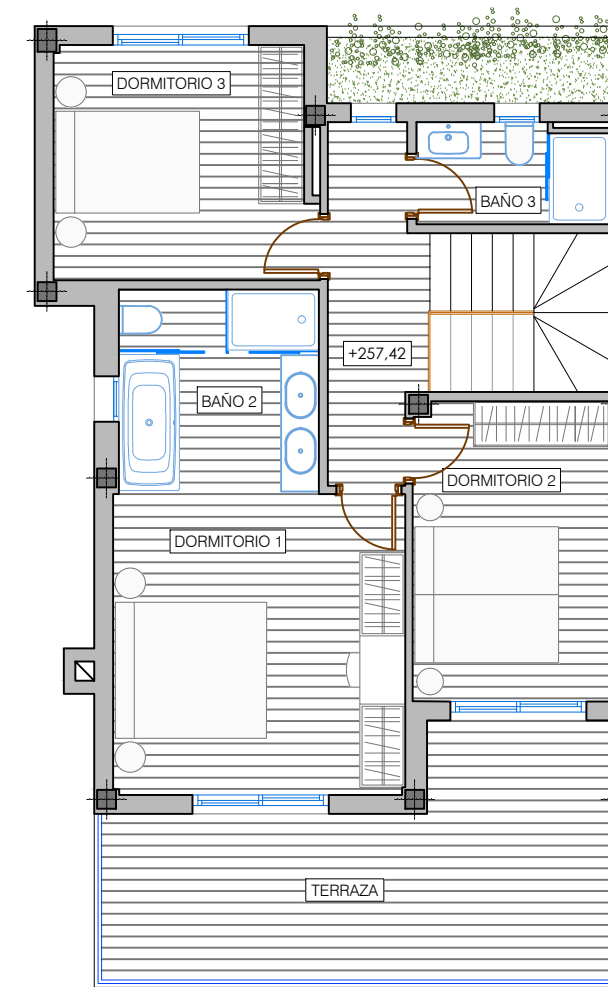
NIVEL 0

SUP. CONSTRUIDA SÓTANO	91.61 m ²
SUP. JARDÍN	60.03 m ²



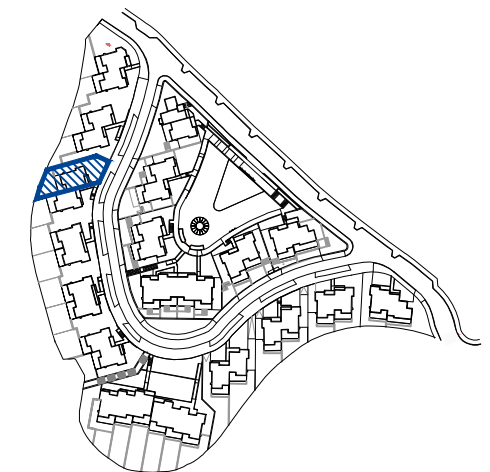
NIVEL 1

SUP. CONSTRUIDA VIVIENDA	71.26 m ²
SUP. CONSTRUIDA PORCHE	16.58 m ²
SUP. CONSTRUIDA CENADOR	25.71 m ²
SUP. JARDÍN TRASERO	13.61 m ²



NIVEL 2

SUP. CONSTRUIDA VIVIENDA	69.36 m ²
SUP. CONSTRUIDA TERRAZA	18.62 m ²



Vivienda 05