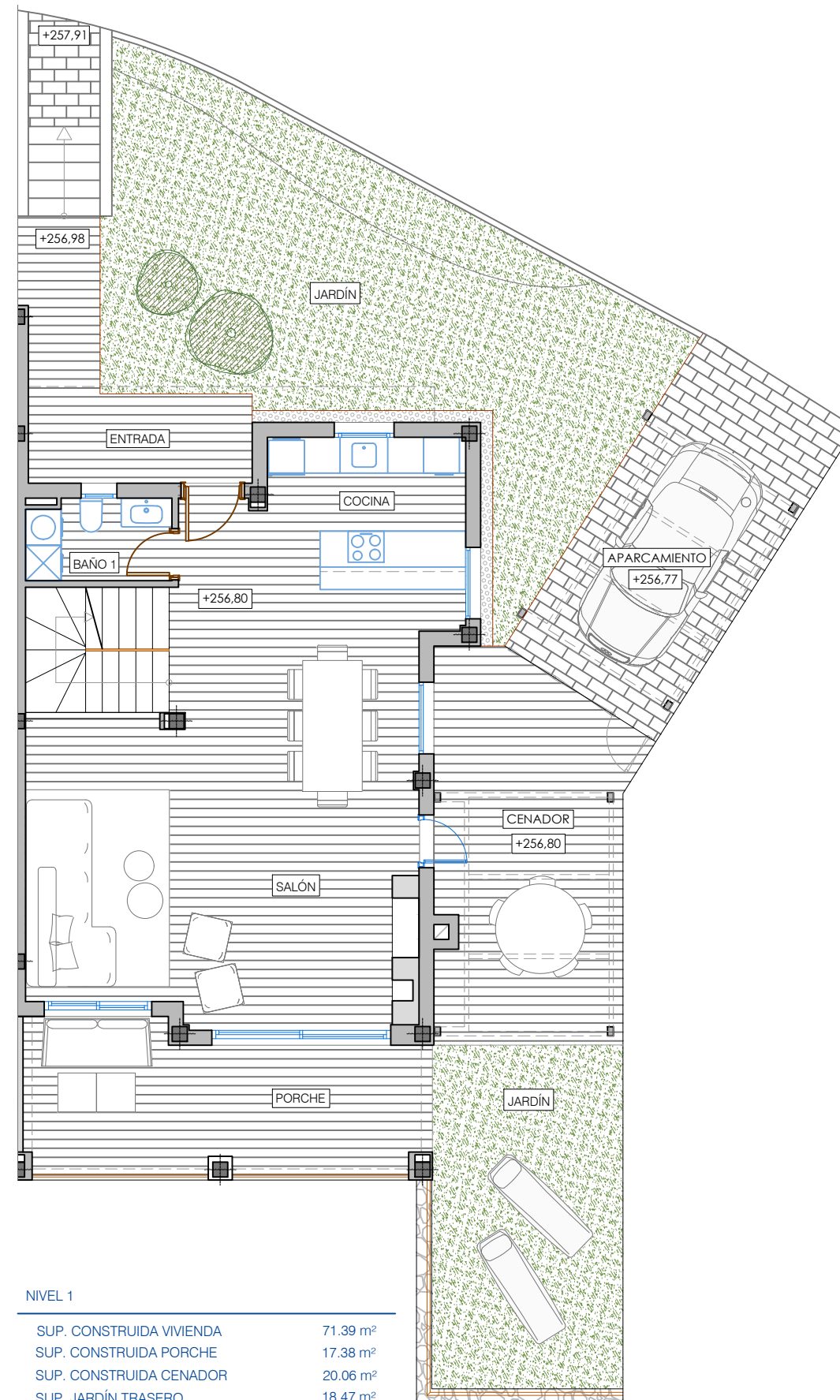


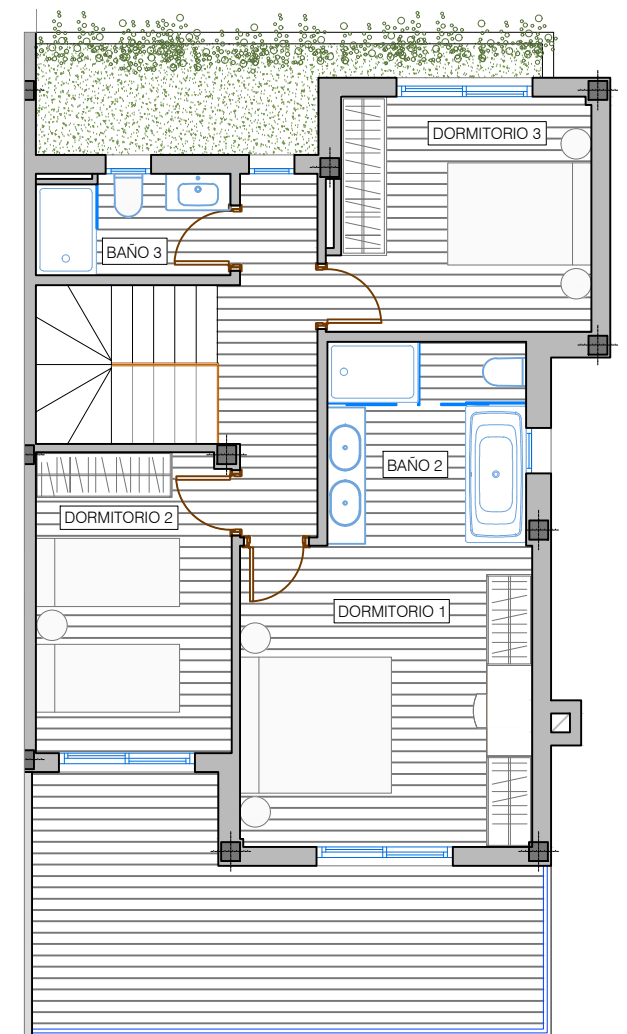
NIVEL 0

SUP. CONSTRUIDA SÓTANO	91.26 m ²
SUP. JARDÍN	61.00 m ²



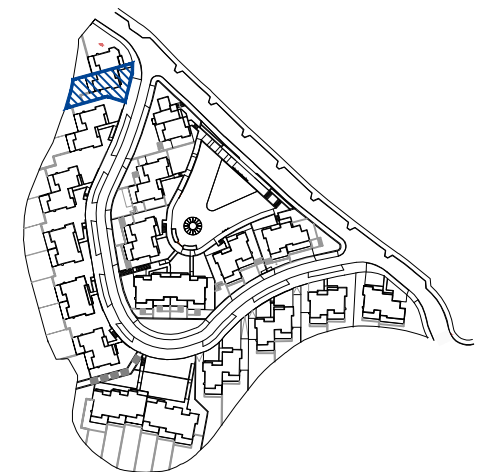
NIVEL 1

SUP. CONSTRUIDA VIVIENDA	71.39 m ²
SUP. CONSTRUIDA PORCHE	17.38 m ²
SUP. CONSTRUIDA CENADOR	20.06 m ²
SUP. JARDÍN TRASERO	18.47 m ²



NIVEL 2

SUP. CONSTRUIDA VIVIENDA	69.04 m ²
SUP. CONSTRUIDA TERRAZA	19.40 m ²



Vivienda 02